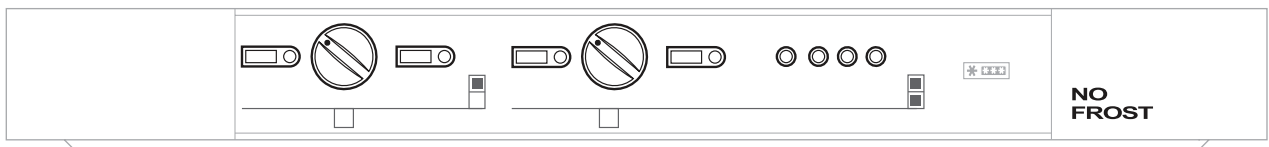
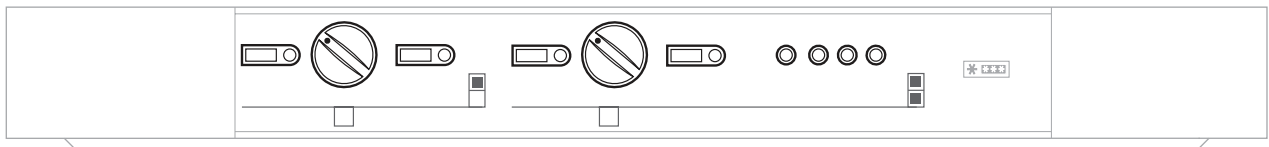


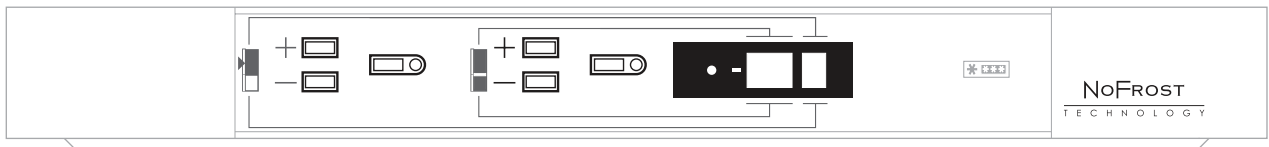
a



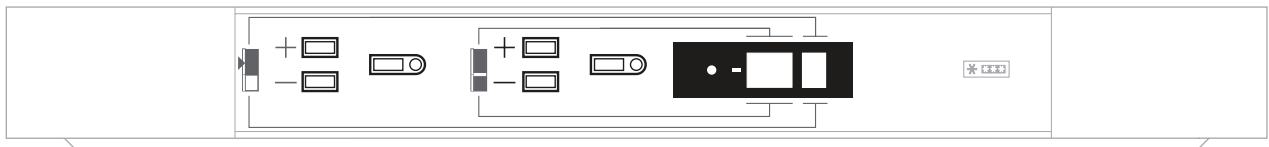
b



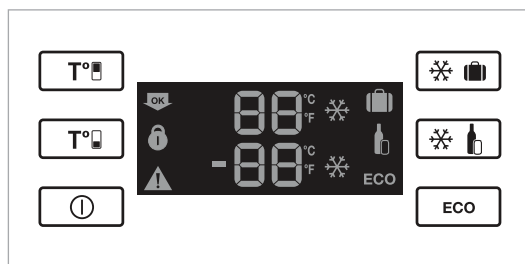
c



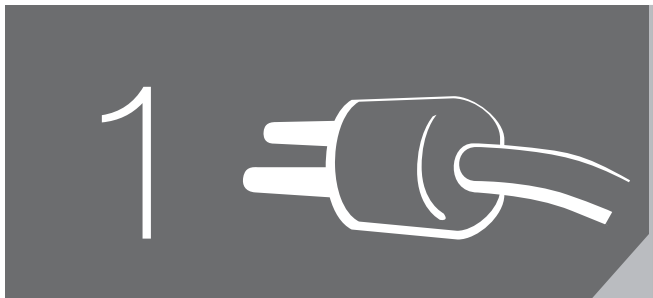
d



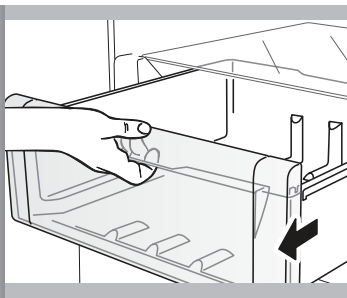
e



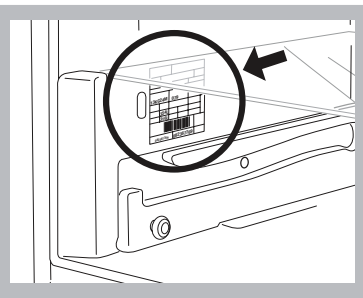
f



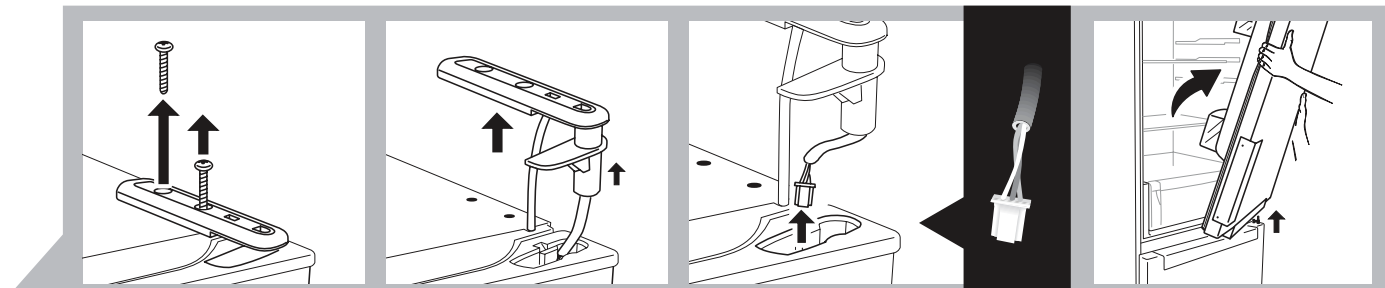
1.3



1.3.1



1.3.2



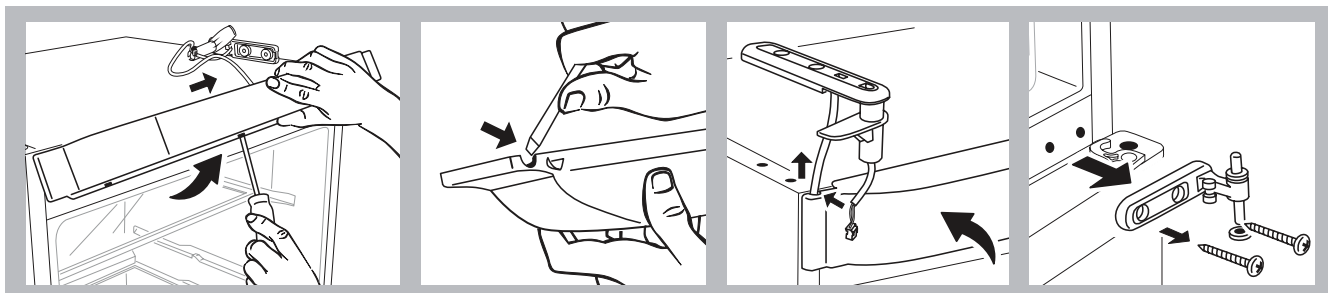
1.4

1.4.1

1.4.2

1.4.3

1.4.4

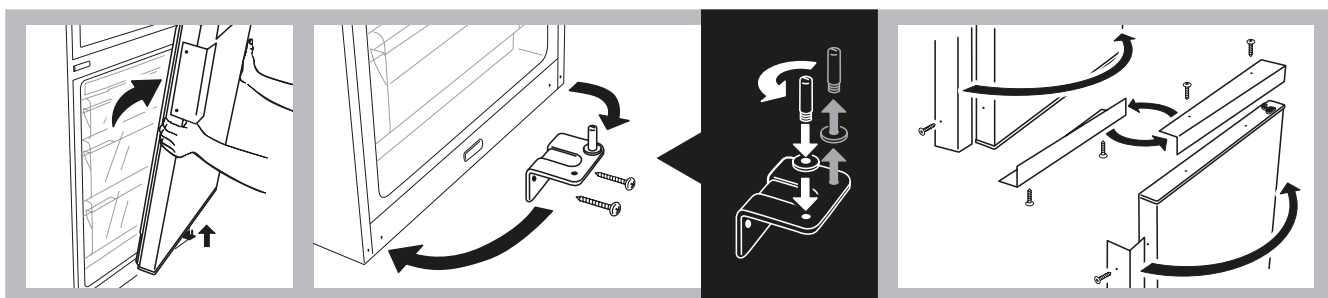


1.4.5

1.4.6

1.4.7

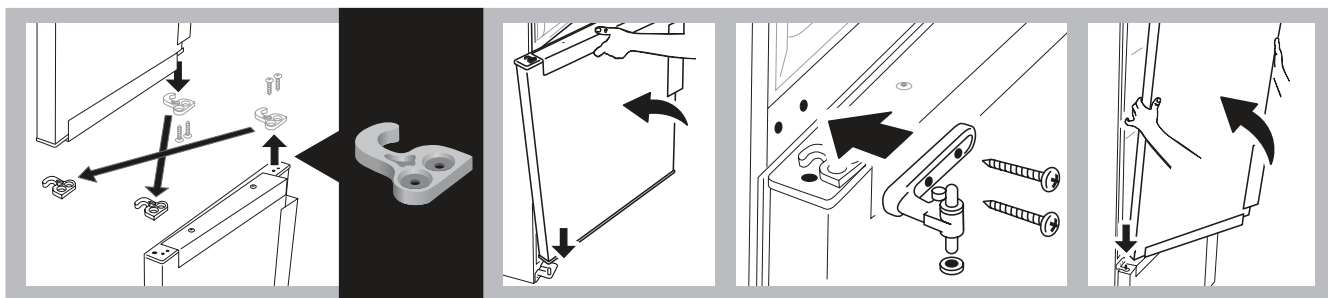
1.4.8



1.4.9

1.4.10

1.4.11

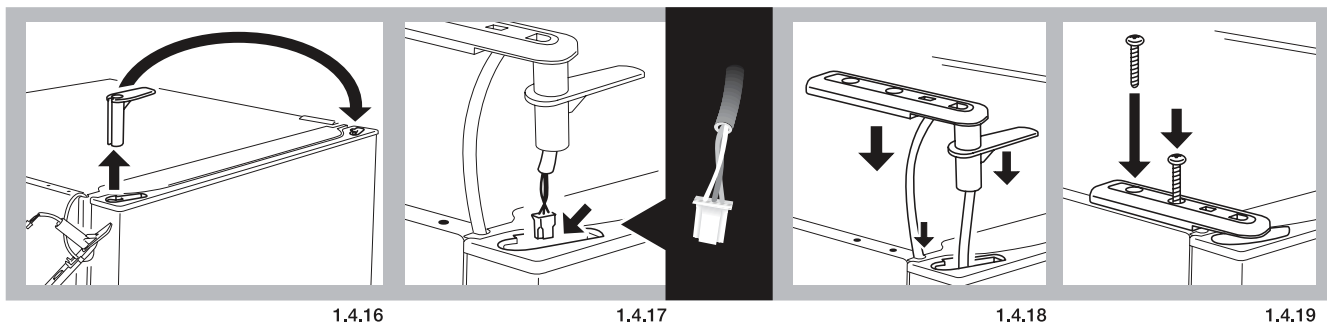


1.4.12

1.4.13

1.4.14

1.4.15



1.4.16

1.4.17

1.4.18

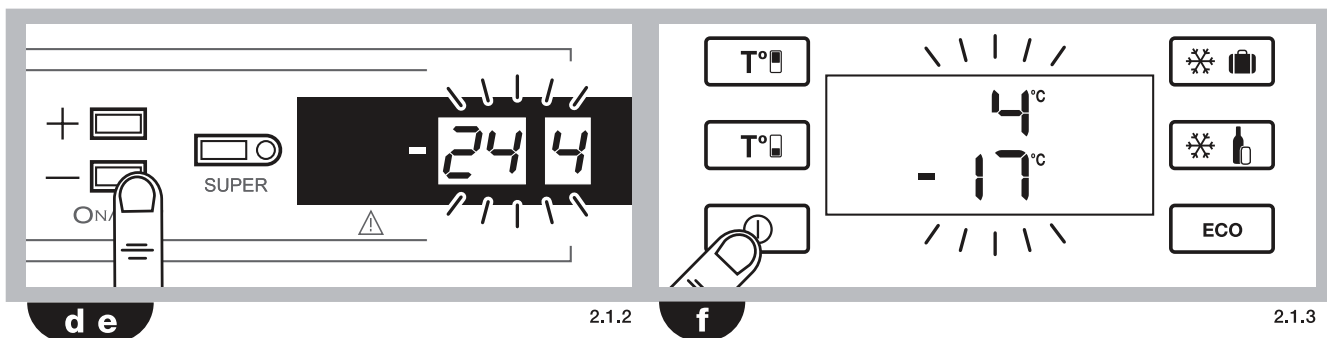
1.4.19



2.1

a b c

2.1.1

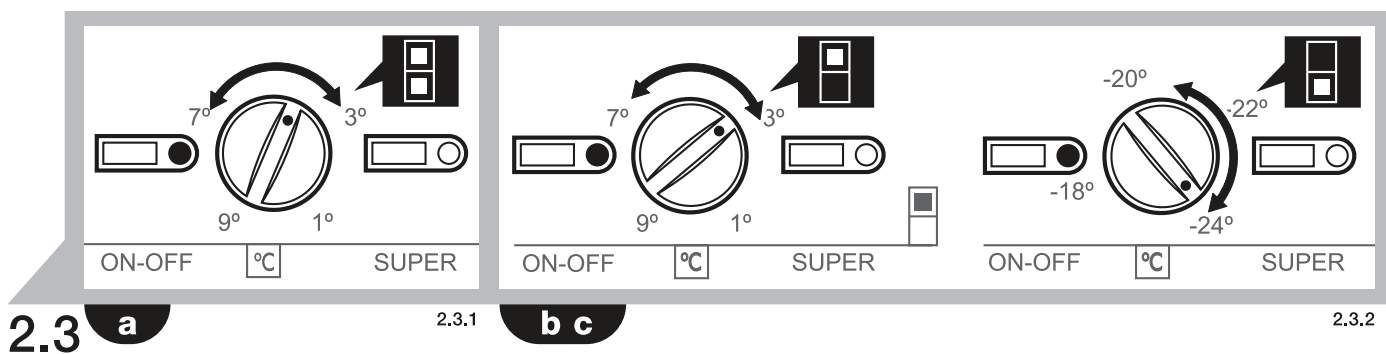


d e

2.1.2

f

2.1.3



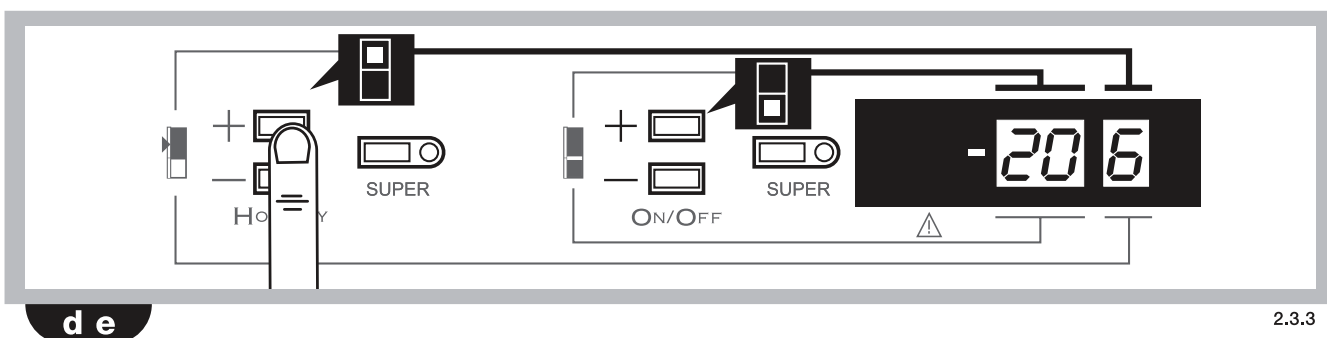
2.3

a

2.3.1

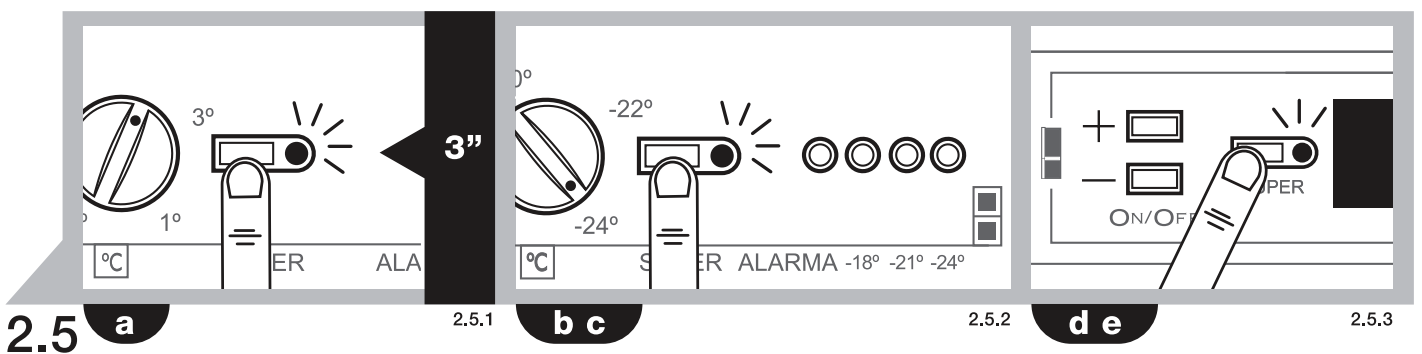
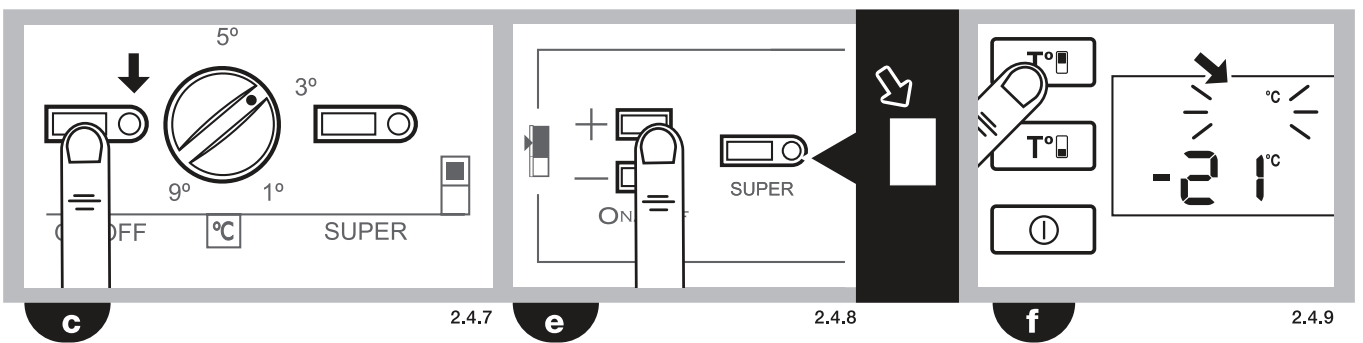
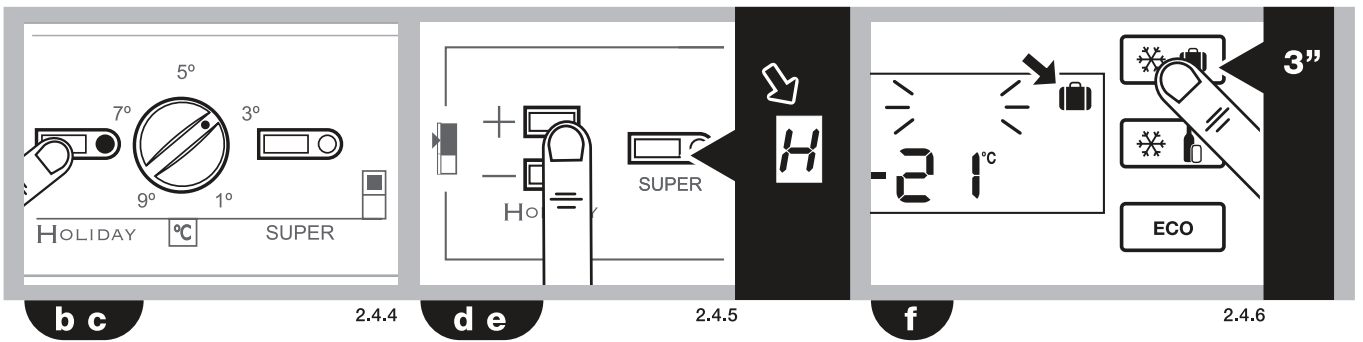
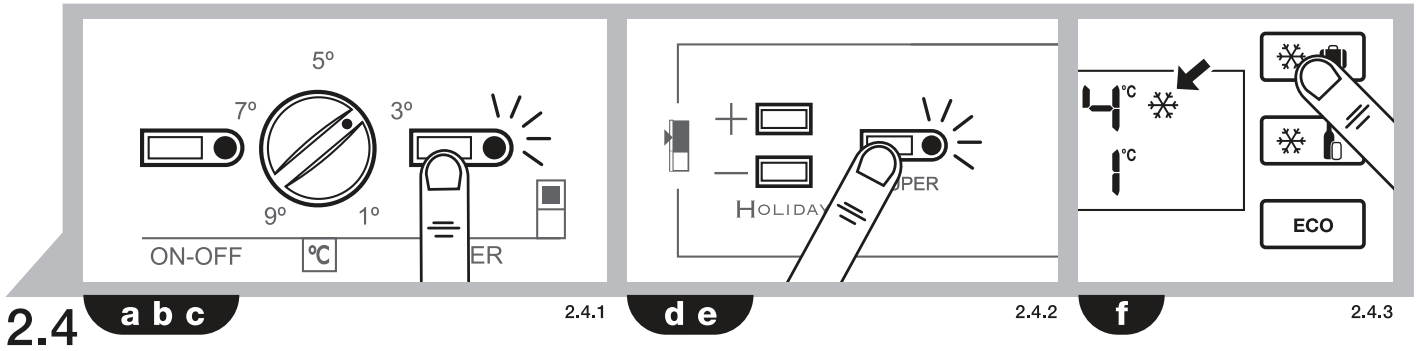
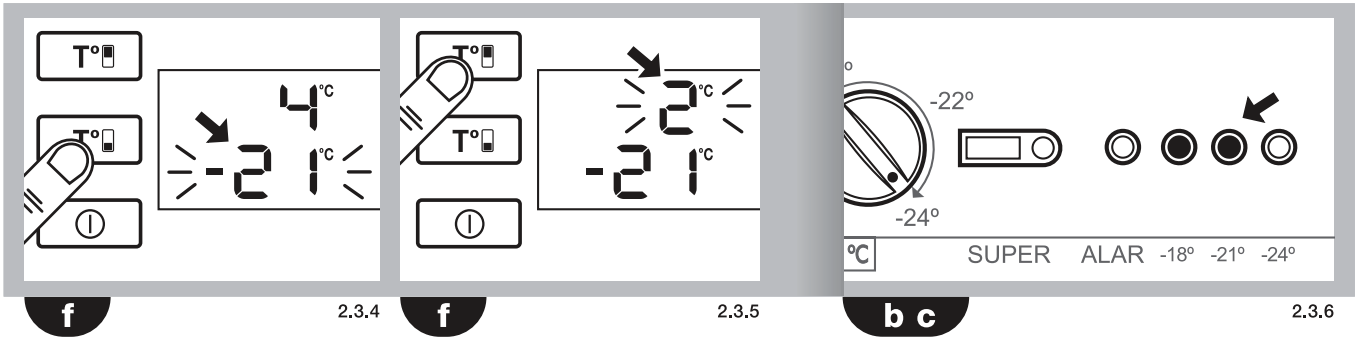
b c

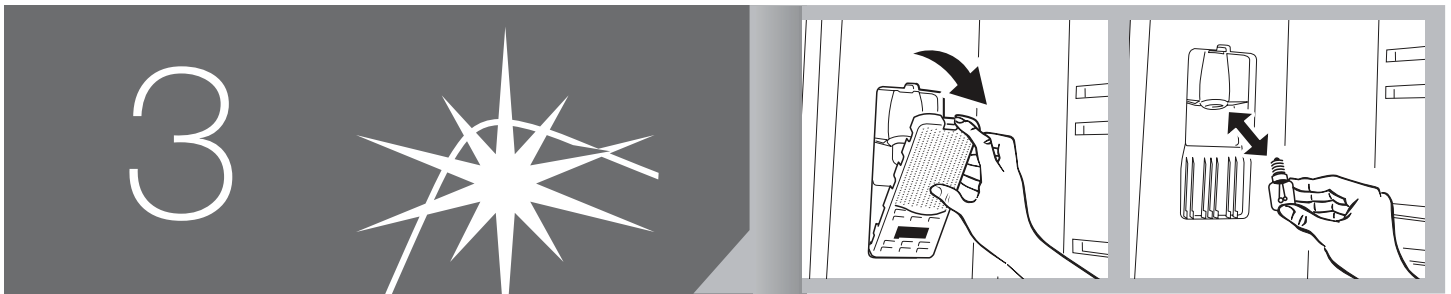
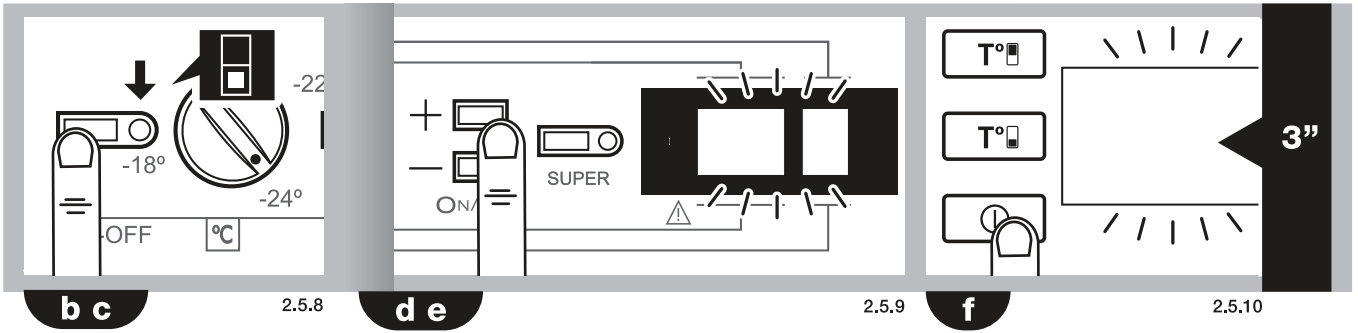
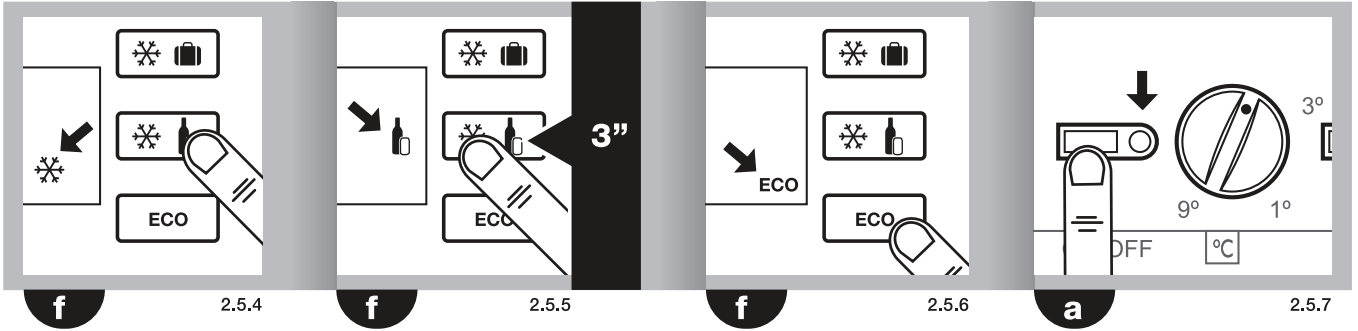
2.3.2



d e

2.3.3

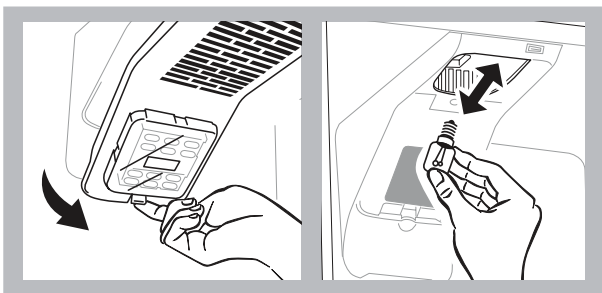




3.4

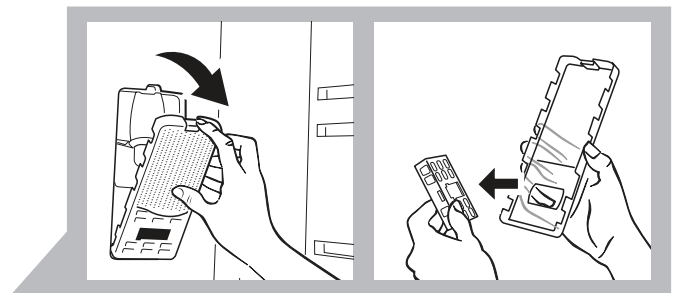
3.4.1

3.4.2



3.4.3

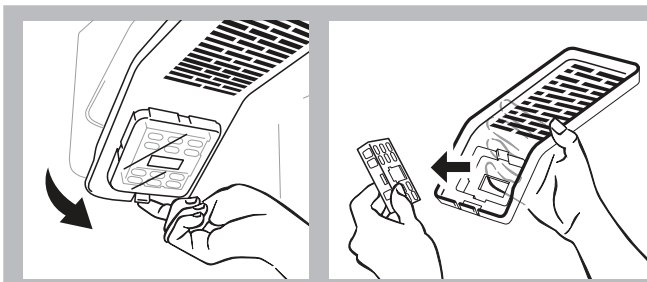
3.4.4



3.5

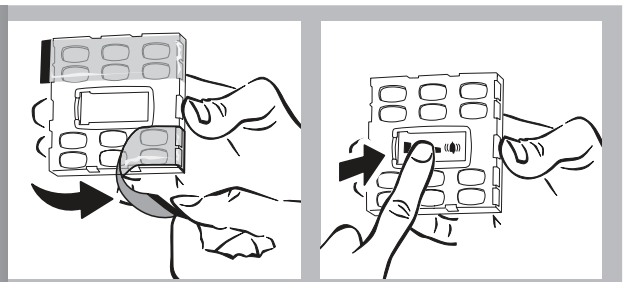
3.5.1

3.5.2



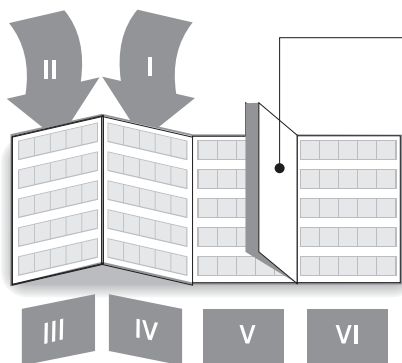
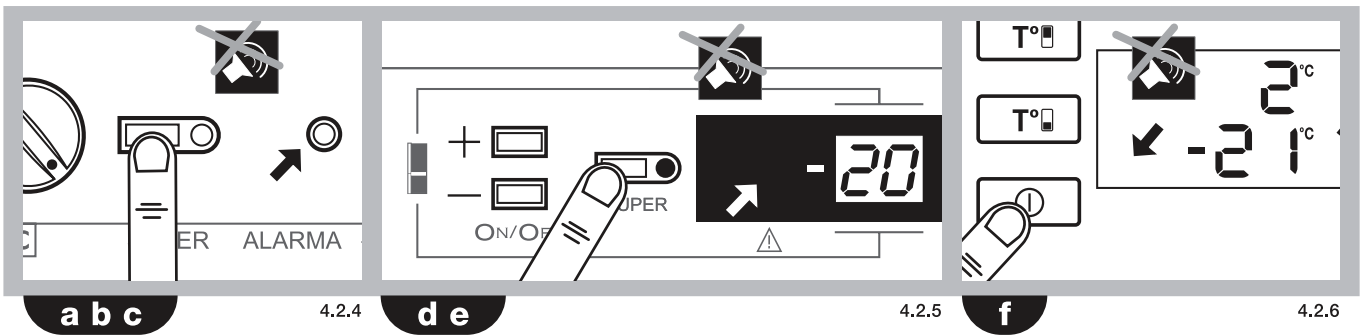
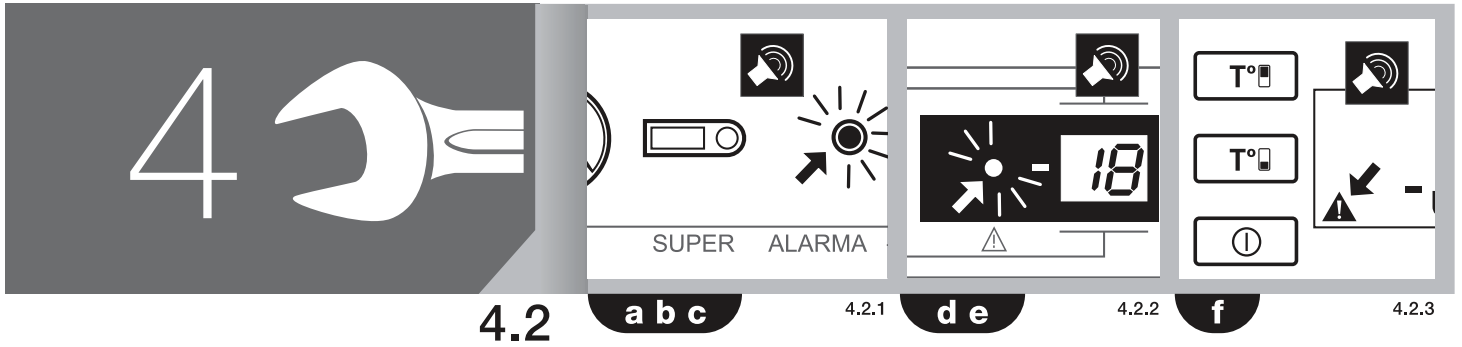
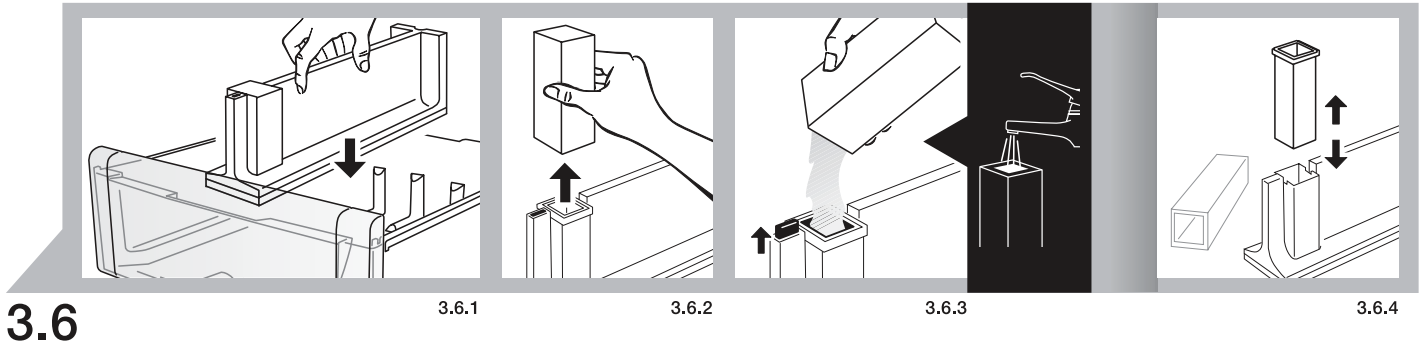
3.5.3

3.5.4



3.5.5

3.5.6



- ES ESPAÑOL
- FR FRANÇAIS
- PT PORTUGUÊS
- EN ENGLISH
- IT ITALIANO
- DE DEUTSCH
- NL NEDERLANDS
- RU РУССКИЙ

- CS ČESKY
- HU MAGYAR
- SK SLOVENSKY
- AR العربية
- CA CATALÀ
- GL GALEGO
- EU EUSKARA



Instruction manual

Very important: Read this manual carefully before using your refrigerator.

This manual is designed with texts corresponding to drawings.



Identification



Identify the model of your refrigerator (“a”, “b”, “c”, “d”, “e”, “f”) by comparing the control panel with the illustrations.



Installation



1.1 Unpacking. Remove all protective elements.

1.2 Placement. Place the refrigerator away from heat sources and protect it from direct sunlight in order to conserve energy.

Do not install the refrigerator in the open air or where it is exposed to rain.

Air should be able to circulate behind the refrigerator. Leave 25 mm between the rear of the refrigerator and the wall. Do not enclose the space between the refrigerator and the floor or ceiling with any object.

Level the refrigerator to prevent vibration and noise. Remember that if the refrigerator is situated next to a wall or cupboard, it could make some noise.

In addition, make sure that the trays are correctly placed and position the containers with a space between them to prevent vibration.

1.3 Connecting to power. Let the refrigerator sit in a upright position for at least 2 hours before connecting it. Check the information on the specification plate (220-240V with ground wire) (1.3.1, 1.3.2).

Do not use adapters or extension leads.

Prevent the cord from coming in contact with the motor or getting trapped beneath it.

1.4 Changing the side that the door opens from. Disconnect the refrigerator from the power outlet and empty the inside of the door.

Remove the screws (1.4.1) and take out the top

hinge and the rotation bushing with the aid of a screwdriver (1.4.2).

Disconnect by pressing the connector tab. (1.4.3). Remove the refrigerator door (1.4.4). Remove the controls with a screwdriver, prying it away using the grooves placed for that purpose (1.4.5).

Make a notch for the cable on the opposite side, as marked on the casing (1.4.6). Remount the control panel passing the cable through the notch you made (1.4.7)

Remove the screw cover from the centre hinge, loosen the screws and remove the hinge (1.4.8). Move the freezer door up (1.4.9).

Loosen the screws of the lower hinge and remove it. Change the position of the hinge axis and place it on the opposite side.

Place the lower freezer handle on the refrigerator door and the lower refrigerator handle on the freezer door, rotated 180°. Place the vertical handles on the opposite side rotating them 180° (1.4.11).

Rotate the self-closures and place the one from the refrigerator on the freezer and vice versa (1.4.12).

Position the freezer door (1.4.13) and attach the central hinge (1.4.14). Position the refrigerator door (1.4.15).

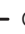


Place the closing cap in the space for the top hinge on the opposite side (1.4.16). Press the connector to plug it into the door (1.4.17).

Fit the top hinge and the rotation bushing, threading the excess cable into the control panel (1.4.18), and screw in the screws (1.4.19).











Operation






2.1 Switching on the refrigerator. Press ON-OFF (2.1.1),  (2.1.3) or the plus  or minus  keys until you see a number in the display (2.1.2). The Mini LCD models lock automatically (2.1.3). To unlock, press any key for 3 seconds.



2.2 Selecting the compartment. In combination refrigerators, the refrigeration compartment  and the freezer compartment  operate independently. On model , the two compartments work together .

2.3 Temperature selection. Turn the control (2.3.1, 2.3.2) or press the **+**, **-** keys, first for the freezer compartment  and then for the refrigerator compartment  (2.3.3), or press **T°**  for the freezer compartment and **T°**  for the refrigerator compartment (2.3.4, 2.3.5).

Once the temperature is selected, you can see the current temperature of the compartment with the lighted indicator (2.3.6) or by pressing the **+**, **-**, **T°**  or **T°**  keys of the appropriate compartment for 5 seconds. The compartment temperature will blink. This function is not available on model .


Recommendation: The recommended temperature for the refrigeration compartment is **4** and the freezer compartment **-19** for already frozen food. If you want to freeze, the recommended temperature is **-24**.

Remember that the interior temperature depends on the temperature of the environment, placement, and frequency with which the door is opened.



2.4 Refrigerator functions.


Rapid cooling mode: This function sets refrigeration to the coldest temperature for 6 hours. It should be used if you put a large quantity of food in the refrigerator.

To activate and deactivate: Press **SUPER** (2.4.1), press  (2.4.2) or   (2.4.3).

Holiday mode: The vacation function is very useful when the refrigerator will not be used for a long period of time, but you want to keep food in the freezer. With this function, your refrigerator will use little power and smells won't develop in its interior. Model  does not have this function.

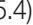
Warning: To use this function, the refrigerator door must be closed.


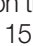

To activate and deactivate: Press **HOLIDAY** (2.4.4) or the **+**, **-** keys until you see **H** on the display (2.4.5) or   for 3 seconds (2.4.6). To cancel, repeat this operation. Some models allow the refrigeration compartment to be shut off.

Press **ON-OFF** (2.4.7), or the **+**, **-** (2.4.8) or **T°**  (2.4.9), keys, until no number can be seen.

2.5 Freezer functions.


Rapid cooling mode: This function sets the coldest freezer temperature for 52 hours. The function should be activated 24 hours before putting a large quantity of food in the freezer.

To enable and disable this function: Hold down **SUPER** for 3 seconds (2.5.1), press **SUPER** (2.5.2, 2.5.3), or  (2.5.4).

Quick cooling function: Place the bottle(s) in the freezer and hold down  for a few seconds, until the  icon appears on the display (2.5.5). The freezer will cool down for 15 minutes. The function will then be complete and  will flash on the display and a beep will sound for 20 minutes. The alarm can be disabled by pressing any button. If there is a power outage and this function is cut off, when the power returns the function will be considered finished and the beep will sound.

ECO function: The ECO function allows the freezer to remain at a stable temperature of -17 °C, providing significant power savings. This function continues to run even if the electricity supply is cut off.

To enable / disable it, press **ECO** (2.5.6).

Connecting / disconnecting the freezer: Press **ON-OFF** key (2.5.7, 2.5.8), the **+**, **-** keys (2.5.9) until no temperature can be seen on the display, or  for 3 seconds (2.5.10). Shutting off the freezer also shuts off the refrigeration compartment.

2.6 Usage recommendations.

- Don't leave the door open more time than necessary and don't put hot foods in the refrigerator. This will provide the most efficient use of the refrigerator and avoid increasing power consumption.
- If your refrigerator is of the NO FROST variety, don't block the ventilation grille and try leave space between food items so that air circulates around them.
- Don't put carbonated drinks or glass bottles containing liquid in the freezer, they can burst.
- Store food in hermetically sealed containers to prevent drying.
- Do not eat extremely cold ices or food as they can produce burns in the mouth.

3

Maintenance and
cleaning

3.1 Interior cleaning. To clean the interior, use a sponge or cloth soaked in water with bicarbonate in order to prevent odours developing. In no case use steam cleaning machines, solvents, or abrasive detergents.

3.2 Exterior cleaning. Do not clean the screens with a steam cleaning machine.

It is advisable to clean the back vent once a year with a vacuum cleaner.

3.3 Cleaning the accessories. Accessories are not suitable for automatic dishwashers. Clean them by hand with a sponge or cloth.

3.4 Changing the lamp. In the case that the lamp goes out: disconnect the refrigerator. Remove the cover by pressing the tab (3.4.1, 3.4.3) and remove the burnt out lamp (3.4.2, 3.4.4). Replace it with another with the same type of thread, E14, 220-240V, 15/25W or according to fixture instructions.

3.5 Changing the carbon filter. The refrigerator may incorporate a carbon filter that absorbs the odours of certain foods and retains microorganisms (fungus and bacteria) circulating in the air.

The filter keeps its properties for 6 months. After that time, it is recommended to replace it. Its location varies based on model.

To activate the filter: Press the tab and remove the cover to access the filter (3.5.1, 3.5.3). Separate the filter from the tab (3.5.2, 3.5.4) and remove the seals (3.5.5).

Press the BIOFILTER viewer until hearing a click (3.5.6) and in a few seconds the duration scale will become coloured. Place the new filter in the original location.

⚠ Keep the old filters and the replacements out of the reach of children: Ingesting a large quantity could be dangerous.

Don't get the filter wet, as it will lose its properties.

3.6 S.P.A. salus per aquam (optional)

Your refrigerator may incorporate the S.P.A. accessory which maintains a constant level

of humidity in the vegetable compartment, preventing drying.

It is located in the vegetable compartment drawer separator. It consists of a receptacle with a pouring container and a fullness level indicator. When the S.P.A. needs water, the level will become hidden. Take out the container (3.6.2) and use it to refill the receptacle.

The filter should be changed every 2 years (3.6.4).


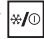


4

Diagnostics



4.1 Door open. If the door stays open for more than 2 minutes, an alarm will sound and the refrigerator light will go off. The alarm is disconnected when the door is closed.

4.2 Freezer not cold enough.

- If the temperature of the freezer is unusually high, a warning light will appear (4.2.1, 4.2.2) or a blinking icon  (4.2.3) as well as a beeping alarm. Press **SUPER** or  to manually shut off the beeping (4.2.4, 4.2.5, 4.2.6). Press **SUPER** or  to switch off the beeper manually (4.2.4, 4.2.5, 4.2.6).
- The first time the refrigerator is connected, the  icon or the warning light will appear, but the alarm won't sound.

4.3 Loss of electrical power


Open the refrigerator doors as little as possible. When the power returns, check if the frozen food has thawed.

4.4 Normal refrigerator noises

It is perfectly normal for your refrigerator to make certain noises while it is running and you should not worry about them.

- The coolant gas can make a bubbling sound as it circulates.
- The compressor may make humming or tapping sounds, especially at start-up.
- The expansion and contraction of material used may make clicking or creaking sounds.

- The air that moves the freezer ventilator may generate a light background sound.

 **Don't try to repair the refrigerator.** Call technical service.

5

Safety



- Keep the ventilation grille uncovered.
- Be careful not to damage refrigeration circuits.
- Don't use electrical devices in the interior of the refrigerator, unless they are recommended by the manufacturer.
- Don't use mechanical devices or means other than those recommended by the manufacturer to speed up the thawing process.
- This appliance is not intended for use by people (including children) whose physical, sensory, or mental capacities are reduced or who lack experience or knowledge, except under supervision or after receiving instruction regarding use of the appliance from a person responsible for their safety. Use by children should be supervised to prevent them playing with the appliance.
- If the power cable is damaged, it should be replaced by the manufacturer, by their after sales service, or by personnel similarly qualified in order to prevent dangerous situations.

6

The environment



This refrigerator was designed with environmental conservation in mind.

The appliance operates with coolant R600A, which does not damage the environment.

Respect the environment. Use the recommended temperatures for each compartment. They will depend on the mode you need for efficient use of your refrigerator.

Disconnect the refrigerator or set it to holiday mode when you will not be using it for a prolonged period. You will reduce power consumption and save energy.

Avoid leaving the doors open more time than necessary. It causes an increase in power use.

Waste management of electrical and electronic appliances.

The symbol  indicates that the appliance must not be disposed of in traditional bins for domestic waste.

Deliver your refrigerator to a special collection centre.

Recycling domestic appliances prevents negative impacts on health and the environment and helps save energy and resources.

For more information, contact your local authorities or the establishment where you purchased your refrigerator.